

**Read the complete manual before installing and using the regulator.**

## Safe Product Selection

When selecting a product, the total system design must be considered to ensure safe, trouble-free performance. Function, material compatibility, adequate ratings, proper installation, operation, and maintenance are the responsibilities of the system designer and user.



### WARNING

- Users must be trained and equipped for the handling, use, and servicing of pressure products and systems.
- Users must contact their gas or liquid supplier for specific safety precautions and instructions.
- Gaseous media should be free of excessive moisture to prevent icing at high flow.
- Always wear the appropriate protective clothing, including safety glasses, gloves, etc., if required.
- Follow the applicable safety and maintenance procedures.
- Obey specific local regulations.
- Do not exceed the maximum inlet and outlet pressure rating of the product or its accessories.
- Operate within the temperature limits and any other conditions specified for the product.
- Do not drop or damage the product in any other way. This may negatively affect the performance of the product which can cause the product to malfunction.
- Venting fluids and gases can be dangerous. Vent to a safe environment away from people. Ensure adequate ventilation.

## Contents

<b>Introduction</b> .....	<b>4</b>
Overview.....	4
Standard Features.....	4
Additional Options .....	4
Oxygen Service .....	4
<b>Installation</b> .....	<b>5</b>
Points of Attention Before Installation .....	5
Installation .....	5
<b>Operation</b> .....	<b>6</b>
Required Tools for Operation .....	6
Points of Attention Before Operation.....	6
Adjusting the Set Pressure.....	6
<b>Maintenance</b> .....	<b>7</b>
Required Tools for Maintenance .....	7
Points of Attention Before Removal from the System .....	8
Removal from the System .....	8
Assembly Reference Data.....	9
Disassembly .....	12
Points of Attention Before Reassembly.....	12
Reassembly.....	13
TBVS8 Series: Standard .....	13
TBVS8 Series: Factory Set Option.....	13
<b>Testing</b> .....	<b>14</b>
Seat Leak Test .....	14
Shell Leak Test.....	14
<b>Troubleshooting</b> .....	<b>15</b>

## Introduction

### Overview

- The TBVS8 series are spring loaded back pressure regulators designed for low pressure, high sensitivity regulation of gases and liquids.
- For pressure and temperature rating information refer to the *Tank Blanketing Pressure Regulators, RHPS Series* catalog, MS-02-431.



#### **WARNING**

**Check that system pressures and temperatures do not exceed those stated on the regulator as this could result in product failure.**

### Standard Features

- Bolted construction
- Stainless steel as standard
- Fully serviceable
- Diaphragm sensing
- Millibar control

### Additional Options

The regulator is available with the following options:

Factory set (FS) and locked

### Oxygen Service

- For more information about hazards and risks of oxygen enriched systems see the *Swagelok Oxygen System Safety* technical report (MS-06-13).
- Cleaning and packaging to ensure compliance with product cleanliness requirements stated in ASTM G93 Level C is available. Refer to the *Tank Blanketing Pressure Regulators, RHPS Series catalog, MS-02-431*, for additional information.

## Installation



### CAUTION

**Do not use the regulator as a shutoff device. A level of leakage across the regulator seat can occur during normal operation.**

### Points of Attention Before Installation

This regulator can be equipped with a variety of different options. Before installing the regulator you should fully understand the functions of the supplied options and the suitability of your particular regulator for the intended application.

- The preferred mounting position of the regulator is horizontal with the spring housing facing upwards per Fig 2. Alternative mounting positions may increase the risk of component wear.
- It may be necessary to remove the regulator from the system during maintenance or service. Ensure that this is possible.
- The regulator is suitable for gases or liquids. Ensure compatibility between the regulator's materials of construction and the system media.

### Installation

- Verify that the regulator, its connections, and any accessories are undamaged.
- Verify that the regulator and any accessories are suitable for the system operating pressure and temperature and have suitable connections.
- At the time of delivery any gauge ports may be plugged with blind fittings. Remove these and connect gauges if desired.
- If inlet/outlet fittings are being used, assemble them to the regulator, per the manufacturer's instructions, prior to installing the regulator in the system.



### CAUTION

**Ensure all upstream tubing/pipework is clean and free from debris. Any swarf, lint, wire, etc. may damage the regulator, resulting in a seat leak.**

- Verify the flow direction of the system and mount the regulator accordingly.
- Securely make the appropriate connections to the regulator in accordance with the procedures recommended by the connection manufacturer.
- Ensure that the tubing/pipework and the regulator are adequately supported and that there is no stress on the connections.
- Upstream and downstream shutoff valves should be installed in the system to facilitate servicing, maintenance, and troubleshooting of the regulator.

## Operation

### Required Tools for Operation

A 19 mm socket is required for changing the set pressure on a standard regulator.

### Points of Attention Before Operation



#### CAUTION

The product can be hot or cold, depending on the environmental temperature and the process media temperature. Take the necessary precautions before operating or touching the product.

- Once the regulator closes, after being open to flow, the inlet pressure may fall a little under the set pressure. This is usually referred to as “**reseat pressure**”. This phenomenon does not indicate a problem with the regulator.
- An increase in the flow may result in a rise of the set pressure. A decrease in the flow may result in a fall of the set pressure. This is usually referred to as “**accumulation**”. This phenomenon does not indicate a problem with the regulator.
- An increase of the outlet pressure may result in a fall of the set pressure. A decrease of the outlet pressure may result in a rise of the set pressure. This is usually referred to as “**dependency**”. This phenomenon does not indicate a problem with the regulator.

### Adjusting the Set Pressure

- The set pressure is the desired outlet pressure of the regulator.
  - To set the regulator, ensure that the supply pressure is greater than the required set pressure but does not exceed the maximum rating of the regulator.
  - The regulator must be able to flow in order for it to reduce the outlet pressure.
1. Open any downstream valve.
  2. To operate, turn the adjusting screw clockwise to increase the set pressure. Turn the adjusting screw counterclockwise to reduce the set pressure.
  3. Partially open the supply valve to allow the regulator to sense the inlet pressure with minimal flow.
  4. Close the supply valve and verify the set pressure by measuring the regulator inlet pressure.
  5. Make adjustments to the set pressure as required and repeat steps 3 and 4.
  6. To obtain the most accurate set pressure final adjustment must be made while **increasing** the set pressure adjustment. If the desired set pressure is exceeded, reduce the pressure below this value then increase up to it.
  7. Once the regulator is set, the supply pressure can be adjusted to its normal working value.
  8. Open the supply valve fully to allow full flow during operation.
  9. When in operation make any final set pressure adjustments if required.

## Maintenance

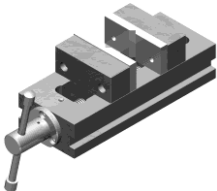

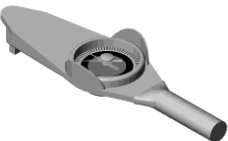





### WARNING

Incorrect or improper repair or servicing of this product can cause serious personal injury and property damage.

- All repairs, servicing, and testing of this product must be performed by competent personnel.
- Following any maintenance of the regulator, it is recommended that the product be tested for operation and leakage.
- The product should be checked periodically for proper and safe operation. It is the user's sole responsibility to determine the frequency of maintenance based on the application.
- To reduce maintenance related system downtime to a minimum, either during commissioning or normal operation, Swagelok recommends having maintenance kits readily available on site. The need for maintenance kits is particularly important during the commissioning phase of a system installation due to residual assembly debris remaining in the system. Such debris can cause a seat leak in the regulator, resulting in components needing to be replaced.

### Required Tools for Maintenance

Smooth-jawed vise		C-ring pliers	
6 mm open-ended wrench		Calibrated torque wrench up to 30 lbf·ft (40 N·m)	
10 mm open-ended wrench			
4 mm hex drive		Lubricant (included in kit): WL-8 <sup>②</sup> Krytox® 240 AC <sup>③</sup>	
3 mm hex drive <sup>①</sup>			
17 mm socket		Liquid leak detector	
19 mm socket			

① Factory set option only

② Standard cleaned assemblies

③ ASTM G93 or SC11 cleaned assemblies

Table 1

## Points of Attention Before Removal from the System

- Swagelok recommends removing the regulator from the system for servicing and maintenance.
- Follow all local system safety and maintenance procedures when removing the regulator.



### WARNING

Before removing a regulator from the system, to avoid personal injury, you must:

- Depressurize the system.
- Purge the system to remove any residual system media left in the regulator.
- Always vent to a safe environment away from people and ensure there is adequate ventilation.



### CAUTION

Check if the process media is hazardous or toxic. If required, take the necessary safety precautions to ensure a safe workspace and your personal safety.



### CAUTION

The product can be hot or cold, depending on the environmental temperature and the process media temperature. Take the necessary precautions before operating or touching the product.

## Removal from the System

1. Isolate the regulator from all pressure sources by closing all appropriate upstream valves in the system.
2. With the regulator set to the open position (i.e. adjusting screw backed off fully counterclockwise) , open all appropriate downstream valves to allow pressure to vent from the regulator.



### WARNING

Ensure all pressure on the inlet and outlet has been fully vented. The accidental release of residual trapped pressure can cause serious personal injury.

3. Disconnect and remove the regulator from the system.



## Assembly Reference Data

Item	Component Name	Kit Type(s)	Torque lbf·ft (N·m)	Recommended Lubrication (included in kit per Table 1)
1	Body plug	C1, C2	30 (40)	Lubricate threads
2	Body plug O-ring	B1, B2, C1, C2		
3	Seat	A1, B1, C1		
4	Seat O-ring	A1, B1, B2, C1		
5	Nut	E1		
6	Lock washer	E1		
7	Body assembly	N/A		
8	Stem	A1, A2, B1, C1		Lubricate threads
9	Guide ring	C1		
10	Retaining ring	C1		
11	Seal housing	C1		
12	Seal housing O-ring	B1, B2, C1		
13	Diaphragm plate	C1		
14	PTFE Diaphragm	B1, B2, C1, C3		
15	Diaphragm support	B1, B2, C1, C3		
16	Lock washer	C1		
17	Diaphragm nut	C1	7 (10)	
18	Spring guide	C1		Lubricate recess of top guide only
19	Set spring	C1, C4		
20	Spring housing	N/A		
21	Cap screw	E1	7 (10)	Lubricate threads
22	Adjusting screw	D1		Lubricate threads
23	FS locking ring <sup>①</sup>	D1		
24	FS locking screw <sup>①</sup>	D1	3.7 (5)	
25	Cover	D1		

① Factory set option only

Table 2

For more information on RHPS series maintenance kits, refer to the *Tank Blanketing Pressure Regulators, RHPS Series* catalog, MS-02-431.

TBVS8 Series, Exploded View

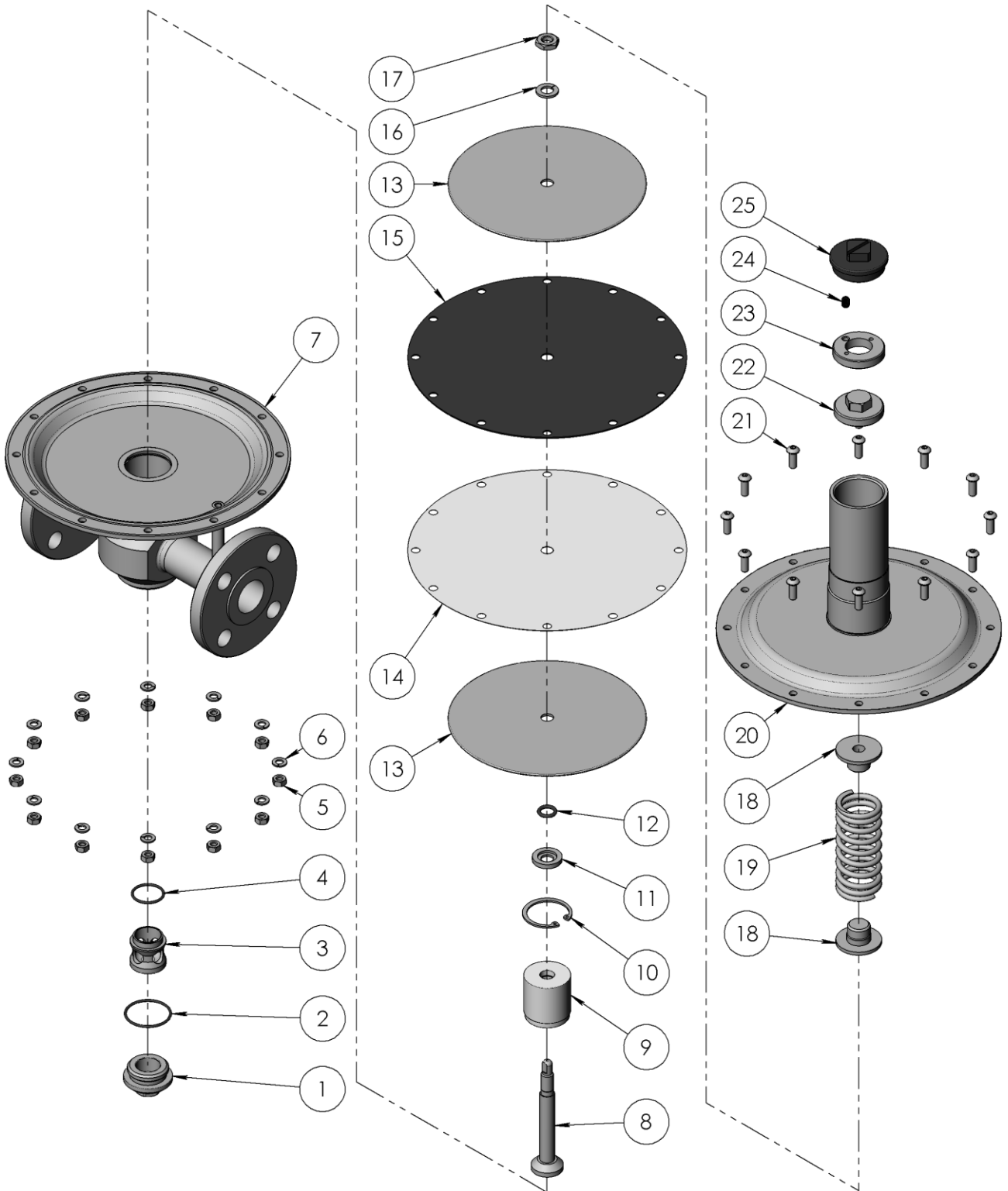


Fig 1

TBVS8 Series, Section View

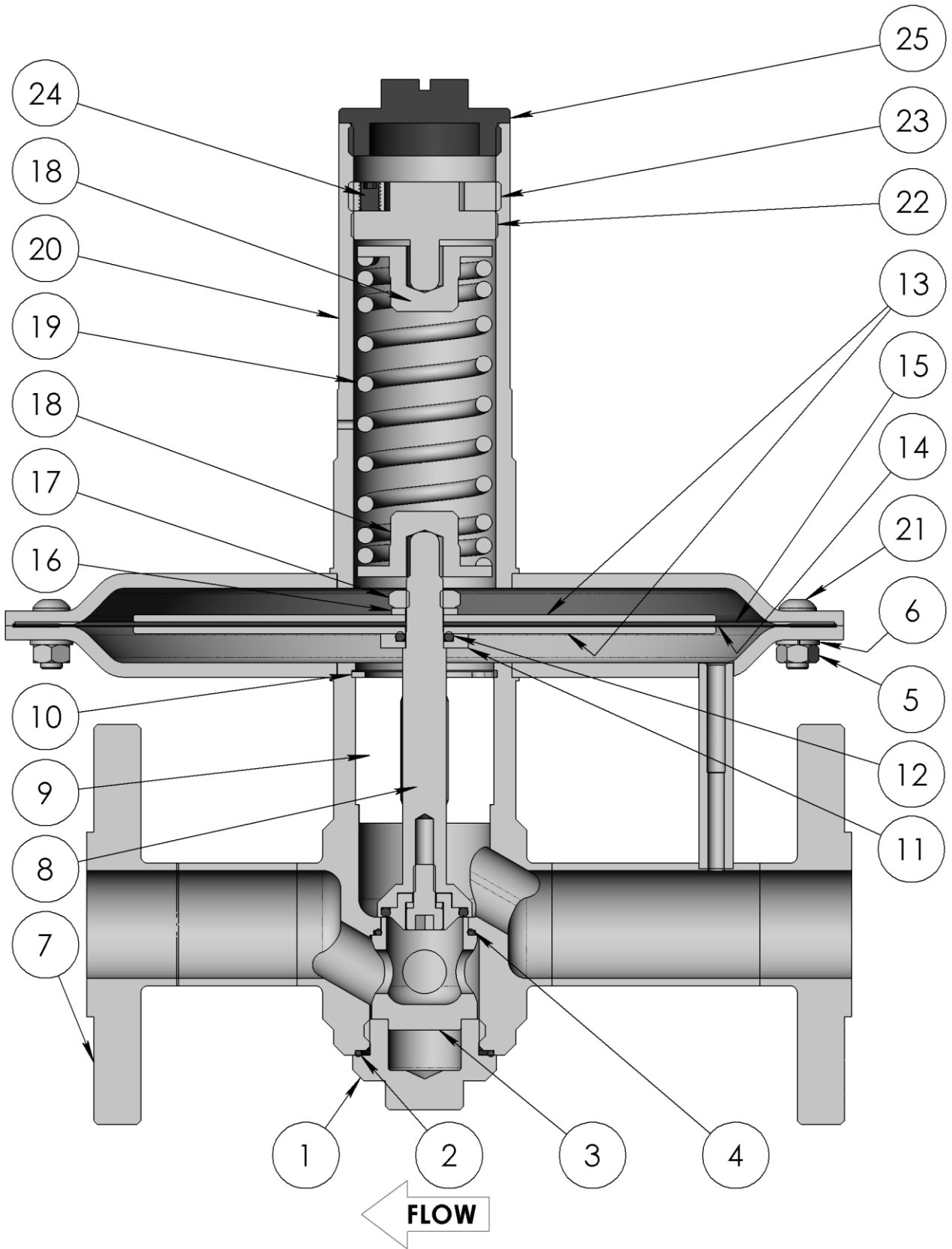


Fig 2

## Disassembly

- The following instructions describe how to fully disassemble the regulator for the purposes of maintenance and repair.
  - Note that not all components listed appear in all regulator configurations.
  - Only disassemble the regulator as far as is required to replace the components supplied in the maintenance kit.
  - Discard all components being replaced.
1. Remove the body plug (1) to remove the seat (3), and seat O-ring (4) from the body assembly (7).
  2. Remove the cover (25) and ensure that the adjusting screw (22) is backed out and not acting on the set spring (19). It can be fully removed, if required, by unwinding counterclockwise until it detaches from the spring housing (20).
  3. Loosen the cap screws (21) and remove the spring housing (20).
  4. Loosen the diaphragm nut (17) and remove the lock washer (16), diaphragm support (15), PTFE diaphragm (14), diaphragm plates (13), seal housing (11), and O-ring (12) from the stem (8).
  5. Remove the retaining ring (10), guide ring (9) and the stem (8) from the body assembly (7).

## Points of Attention Before Reassembly

- Visually inspect all components for abnormal wear or damage. Replace components in case of doubt.
- All parts must remain clean and undamaged before starting assembly.
- Maintenance kit components will be supplied preassembled where practicable to aid reassembly.
- Swagelok recommends replacing all O-rings removed during disassembly.



### NOTICE

**All threaded components must be lightly lubricated per Table 2 before reassembly to avoid galling of threads.**

## Reassembly

### TBVS8 Series: Standard

1. Secure the body assembly (7) in a vise.
2. Place the seat O-ring (4) onto the seat (3), then insert them both into the body assembly (7).
3. Fit the body plug O-ring (2) into the body assembly (7).
4. Lightly lubricate the body plug threads (1) then thread it into the body assembly (7). Torque to 30 lbf·ft (40 N·m).
5. Insert the stem (8) into the guide ring (9).
6. Insert the guide ring (9) into the body and retain it with the retaining ring (10).
7. Fit the seal housing (11), seal housing O-ring (12), first diaphragm plate (13), diaphragm (14), diaphragm support (15), and second diaphragm plate (13) onto the stem (8) per Fig 2.
8. Lightly lubricate the stem thread (8) then fit the lock washer (16) and diaphragm nut (17) onto it. Torque the nut to 7 lbf·ft (10 N·m).
9. Place one of the spring guides (18) and the set spring (19) onto the poppet stem (8).
10. Lubricate the recess of the remaining spring guide (18) then place this into the set spring (19).
11. Cover the spring with the spring housing (20).
12. Lightly lubricate the cap screws (21). Secure the spring housing (20) to the body (7) using the cap screws (21), washers (6), and nuts (5). Torque to 7 lbf·ft (10 N·m).
13. Lubricate the adjusting screw thread (22) and install into the top of the spring housing (20).
14. Fit the cover (25) into the top of the spring housing (20).

### TBVS8 Series: Factory Set Option

1. Follow steps 1 through 13 of the TBVS8 series standard reassembly procedure.
2. Screw the FS locking ring (23) into the spring housing (20) until it contacts the adjusting screw (22).
3. Insert the FS locking screw (24) into the FS locking ring (23) and torque to 3.5 lbf·ft (5 N·m).
4. Follow step 14 of the TBVS8 series standard reassembly procedure.

## Testing

Swagelok recommends that the regulator be tested for seat and shell leakage to atmosphere. A well performing regulator will not show any indication of leaking. If any evidence of a leak is identified this must be rectified. Any damaged components must be replaced.

### Seat Leak Test

1. Ensure there is sufficient supply pressure to the regulator to be able to perform the tests.
2. Ensure any downstream shutoff valves are open.
3. Set the regulator to its maximum set pressure then close the supply shutoff valve.
4. Monitor the inlet pressure and/or use liquid leak detector on the outlet port. A drop in inlet pressure over time or bubbles in the leak detector indicates a seat leak.

### Shell Leak Test

1. Set the regulator to the open position (i.e. ensure the actuating stem is fully backed off counterclockwise).
2. Close the downstream shutoff valve.
3. Maintain maximum inlet pressure on the regulator. Measure the outlet pressure to ensure this also reads the same value.
4. Using liquid leak detector, check for bubbles at the spring housing to body interface, body plug to body interface and the spring housing weep hole.

## Troubleshooting

Symptom	Cause	Remedy
Constant leakage from the outlet before the set pressure is reached.	A damaged seat and/or stem.	Replace the seat and/or stem.
Leakage around the body plug.	A damaged O-ring.	Replace the O-ring.
Leakage between the body and the spring housing.	A damaged diaphragm.	Replace the diaphragm.
	Insufficient torque on the spring housing.	Tighten the cap screws per Table 2.
The required set pressure cannot be reached.	The inlet pressure to the regulator is not high enough.	Ensure that the inlet pressure to the regulator is equal to or greater than the desired set pressure.
The inlet pressure rises too much when going from a dynamic to a static situation.	There is too much flow in the dynamic situation.	A larger regulator or parallel regulator is required. Review application flow capacity and contact your local authorized sales and service center.
The regulator will not relieve at the set point.	The stem is sticking.	Replace the stem.
	The set point has been accidentally altered.	Readjust the set point.
The set pressure has changed without adjusting the set screw.	Changes to the outlet pressure may result in changes to the set pressure.	Maintain a constant outlet pressure on the regulator. See <b>"Points of Attention Before Operation"</b> about <b>dependency</b> .
	Changes to the flow may result in changes to the set pressure.	Maintain a constant flow through the regulator. See <b>"Points of Attention Before Operation"</b> about <b>accumulation</b> .

Table 3

## Warranty Information

Swagelok products are backed by The Swagelok Limited Lifetime Warranty.  
For a copy, visit [swagelok.com](http://swagelok.com) or contact your authorized Swagelok representative.

Swagelok, Snoop - TM Swagelok Company

Krytox – TM The Chemours Company

© 2018 Swagelok Company

July 2018, RevB

MS-CRD-0168

The Swagelok logo is written in a blue, stylized, cursive font. The letters are connected, and the 'S' is particularly large and prominent.