

Swagelok Source Inlet (SSI)

For installations where there is heavy gas usage or where extra control is needed prior to the Swagelok gas panel (SGP), a Swagelok source inlet (SSI) may be used. An SSI typically includes isolation, vent, and purge options. Additionally, there will be hoses or hard-tubing pigtails to connect each bottle to the manifold.

The SSI is limited to a pressure rating of 4351 psig (300 bar).

SSI features include:

- Configurable bottle spacing to accommodate a wide range of bottle storage methods
- Bottle identification tags
- Ability to isolate individual gas bottles or entire manifold to maximize safety

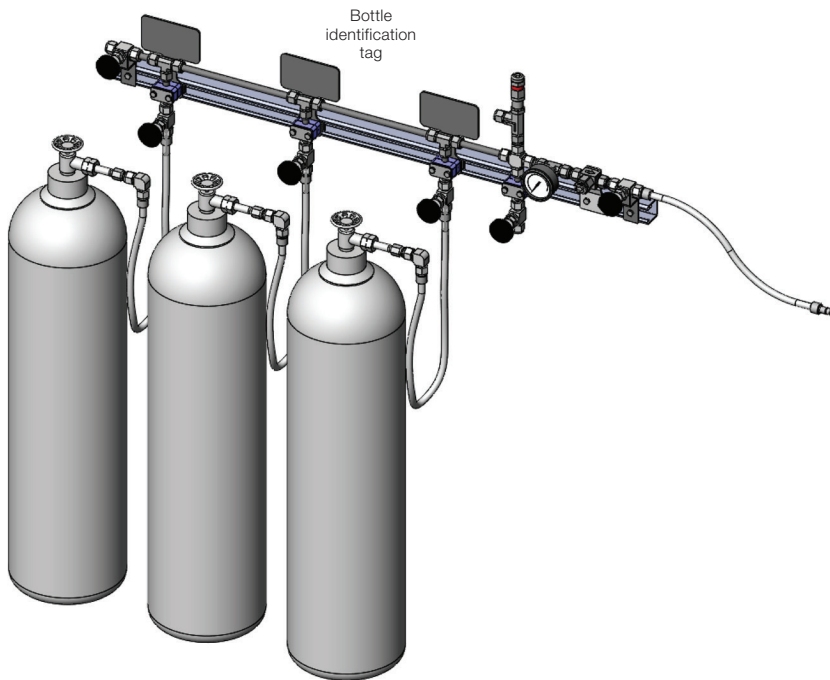


Fig. 4 SSI for Three Bottles

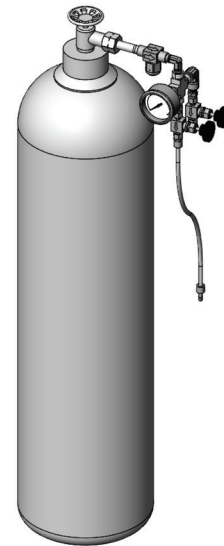


Fig. 5 SSI for Single Bottle with No Rail

System may include:

- Swagelok tube fittings
- Seamless tubing
- TF series filter
- R series relief valve
- Swagelok hose
- PGI series gauges (63C)
- D series nonrotating-stem needle valve
- Bracket/misc hardware

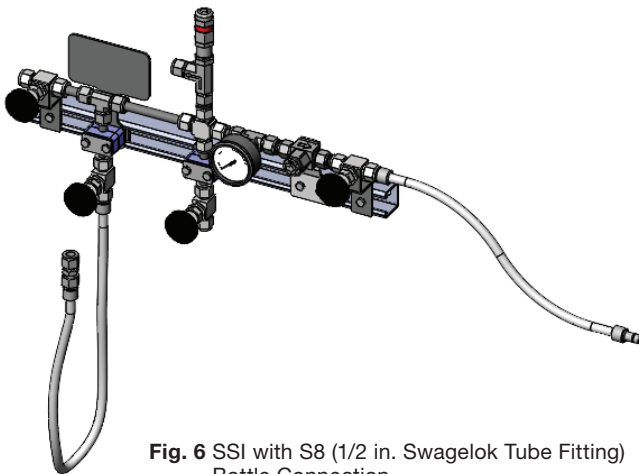


Fig. 6 SSI with S8 (1/2 in. Swagelok Tube Fitting) Bottle Connection

SSI continued

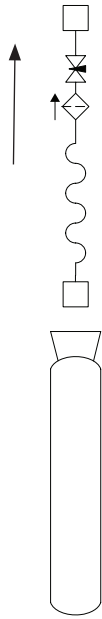


Fig. 7 SSI P&ID for One Bottle

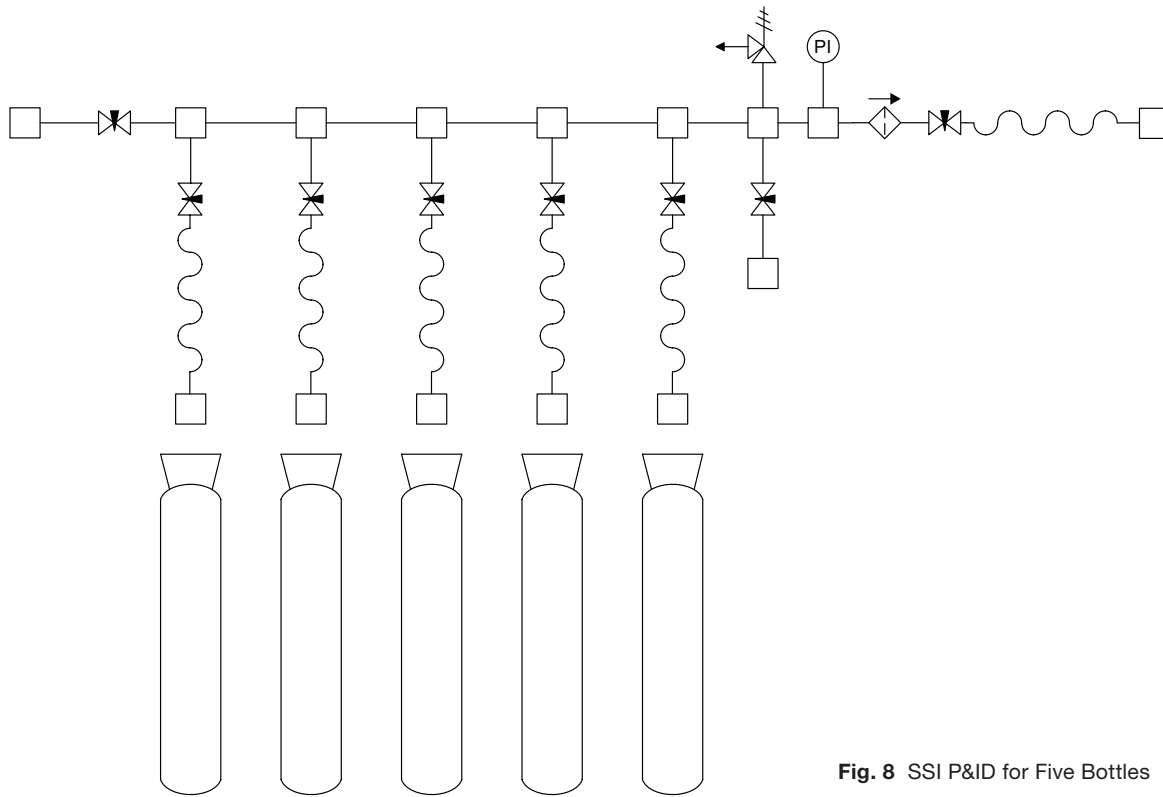


Fig. 8 SSI P&ID for Five Bottles

Swagelok

SSI continued

Ordering Information

Build an ordering number by combining the designators in the sequence shown below.

SSI **1** **2** **3** **4** **5** **6** **7** **8** **9** **10** **11** **12**
N 4 C2 8 1 1 0 1 1 TH S8 E

1 Gas Type

- N = Inert
- O = Oxygen®

① A gas type of oxygen may limit selections available for other components.

2 Number of Bottles

3 Desired Bottle Connection

See reference tables below

4 Tube OD

- 4 = 1/4 in.
- 8 = 1/2 in.
- A = 6 mm
- B = 12 mm

5 Isolation Valve

- 0 = None
- 1 = On main line
- 2 = On individual bottles
- 3 = On main line and individual bottles

6 Vent Valve

- 0 = None
- 1 = On main vent

7 Purge Valve

- 0 = None
- 1 = On main line

8 Relief Valve

- 0 = None
- 1 = Yes
- 2 = Country/regional standard

9 Pressure Gauge

- 0 = None
- 1 = Yes

10 Inlet Connection

- TH = TH hose
- XT = XT hose
- FM = FM hose
- FX = FX hose
- 8R = Thermoplastic hose
- FP = Pigtail
- MP = Metric pigtail
- FR = Rectoil
- MR = Metric rectoil

11 Outlet Connection

- 00 = None
- S4 = 1/4 in. Swagelok tube fitting
- S8 = 1/2 in. Swagelok tube fitting
- M6 = 6 mm Swagelok tube fitting
- M2 = 12 mm Swagelok tube fitting
- F4 = 1/4 in. Female NPT
- TH = TH hose
- XT = XT hose
- FM = FM hose
- FX = FX hose
- 8R = Thermoplastic hose
- FP = Pigtail
- MP = Metric pigtail
- FR = Rectoil
- MR = Metric rectoil

12 Options

- H = Helium leak test
- E = ASME 3.1 material certification

Note: Multiple options can be added to the end of an ordering number.

		Position 3 Character 1				
		CGA	BS341 (250 bar)	BS341 (300 bar)	DIN477-1 200 bar	DIN477-5 300 bar
		C	B	3	D	5
Position 3 Character 2	1		BS-1	BS-31	Nr. 1	
	2	CGA 680		BS-32		
	3	CGA 695	BS-3			
	4		BS-4			Nr. 54
	5				Nr. 5	Nr. 55
	6		BS-6		Nr. 6	Nr. 56
	7		BS-7		Nr. 7	Nr. 57
	8		BS-8	BS-38	Nr. 8	Nr. 58
	9				Nr. 9	Nr. 59
	0		BS-10	BS-30	Nr. 10	
	A				Nr. 11	Nr. 60
	B	CGA 320	BS-12		Nr. 12	
	C		BS-13		Nr. 13	
	D	CGA 350	BS-14		Nr. 14	
	E		BS-15			
	F	CGA 540	BS-16			
	G	CGA 580				
H	CGA 590					
I						
J	CGA 660					

Position 3 Character 1 and 2	End Connections when No Bottles to be Connected	
	S4	1/4 in. Swagelok tube fitting
	S8	1/2 in. Swagelok tube fitting
	M6	6 mm Swagelok tube fitting
	M2	12 mm Swagelok tube fitting
	F4	1/4 in. Female NPT
N4	1/4 in. Male NPT	

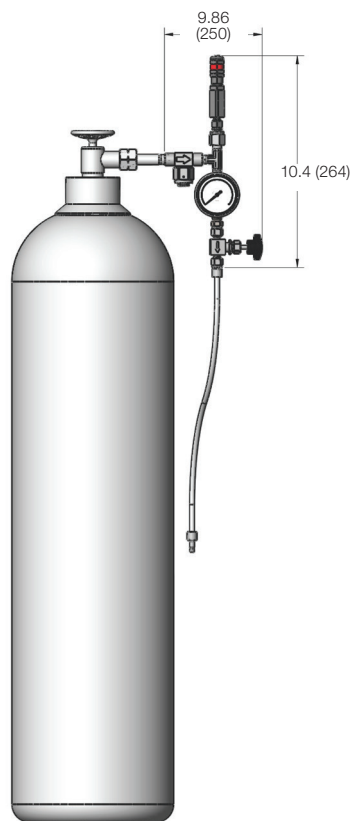
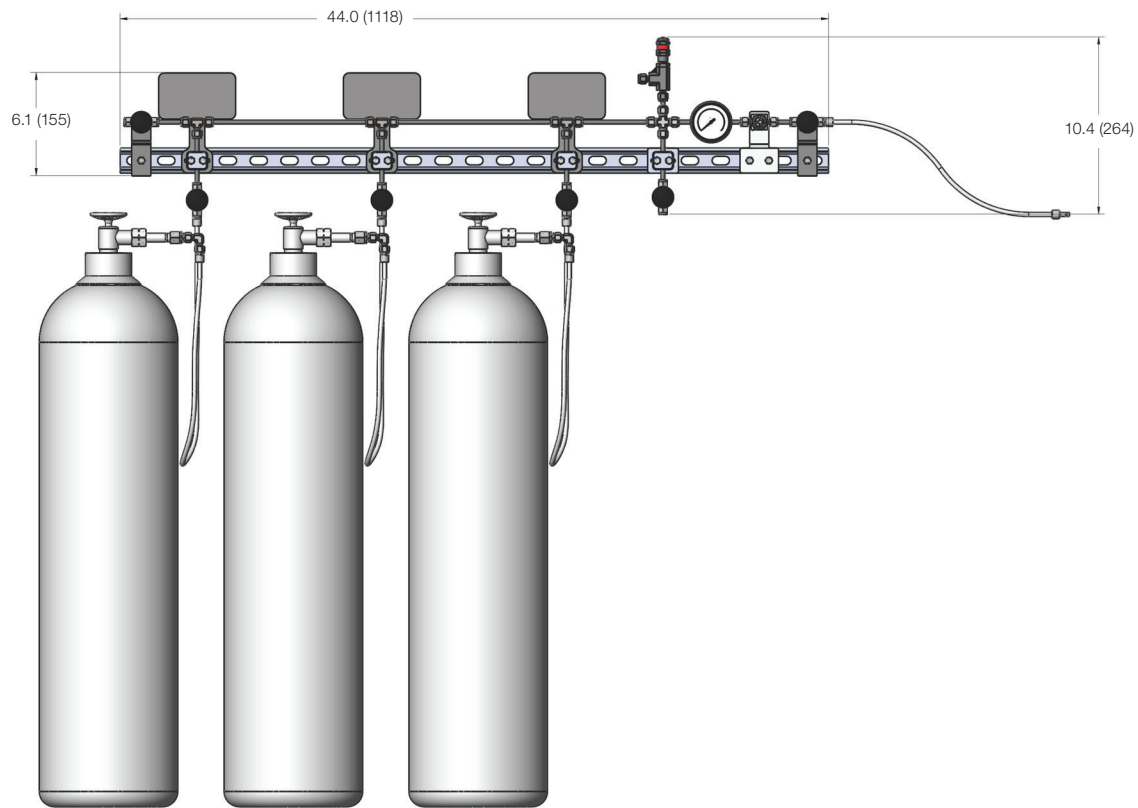
Examples

Desired Bottle Connection	Position 3 Designators
CGA 680	C2
B56	B6
BS32	32
DIN 477-1 Nr. 5	D5
1/4 in. Swagelok tube fitting (no bottle)	S4

SSI continued

Dimensions

Dimensions, in inches (millimeters), are for reference only and are subject to change.



Contact us for more information:

Swagelok North Carolina | East Tennessee

<http://nctn.swagelok.com> - info@nctn.swagelok.com

Raleigh, NC
919.878.8085

Charlotte, NC
704.289.7400

Knoxville, TN
865.673.6610

All service marks and trademarks shown are owned and registered by Swagelok Company unless otherwise noted. © 2021 Swagelok North Carolina | East Tennessee. © 2021 Swagelok Company.