

Swagelok® Welding System

M200 Power Supply

M200
POWER
SUPPLY

Features

- Power supply for reliable, consistent orbital gas tungsten arc welding
- Up to 200 A peak output capability
- Easy-to-use color touch screen in multiple languages
- Integrated mass flow controller automatically controls OD shield gas flow
- Weighs less than 50 lb or 23 kg
- Compatible with Swagelok welding system weld heads

Features

The Swagelok welding system M200 power supply offers precision and control combined with easy-to-use touch-screen operation for orbital welding.

- High-resolution 12.1 in. (30.7 cm) color SVGA industrial touch screen
- Simple transition from Swagelok M100 power supply
- Integrated mass flow controller automatically controls OD shield gas throughout the weld cycle
- Up to 200 A peak output capability
- Multiple weld procedure data entry options
 - Automatic weld procedure generation includes 12 different material options
 - Simplified manual weld procedure entry
 - Single-level mode resembling Swagelok D100 power supply
- Real-time monitoring and recording of weld output performance
- Low EMI arc start technology
- Multiple language capability, including Chinese (simplified and traditional), English, French, German, Japanese, Korean, Russian, Spanish, and Swedish
- Meets CE, RoHS (EU), GOST R (Russia), CCC (China), and Canadian requirements



Technical Data

Power

Input: 100 to 230 V (ac);
Output: 2 to 200 A (dc)

Service Ratings^①

Input	Average Output	Duty Cycle ^②
100 V/20 A	80 A	100 %
115 V/20 A	90 A	100 %
115 V/30 A	110 A	100 %
200 V/20 A	130 A	100 %
230 V/16 A	130 A	100 %
230 V/16 A	160 A	35 %

^① See the Swagelok M200 Power Supply User's Manual, MS-13-212, for duty cycle at temperature.

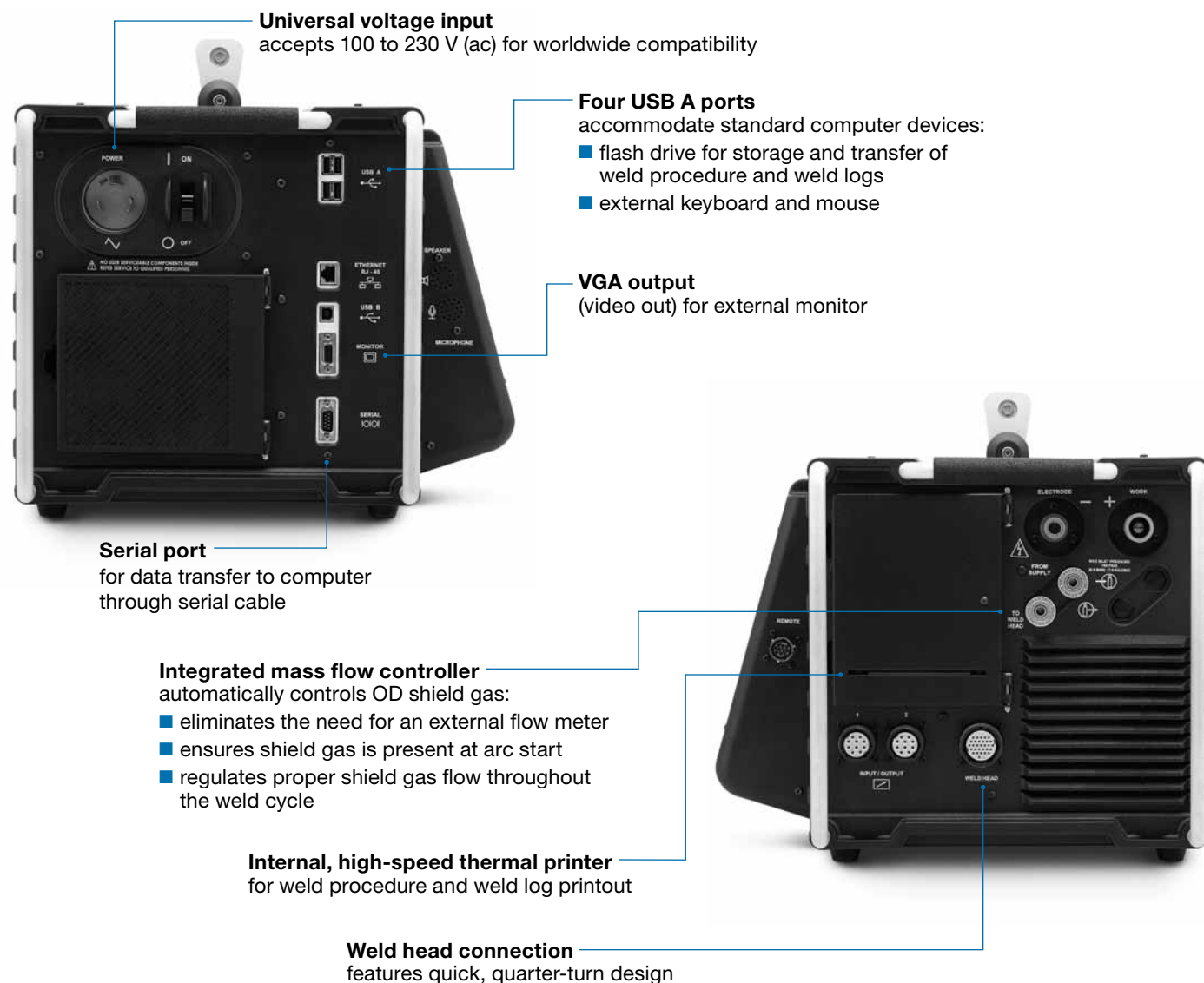
^② Rating without optional fan filter.

Dimensions

13.5 H by 22.8 W by 15.5 D in.
(34.3 by 57.9 by 39.4 cm)

Weight

49.7 lb (22.5 kg)



Operation

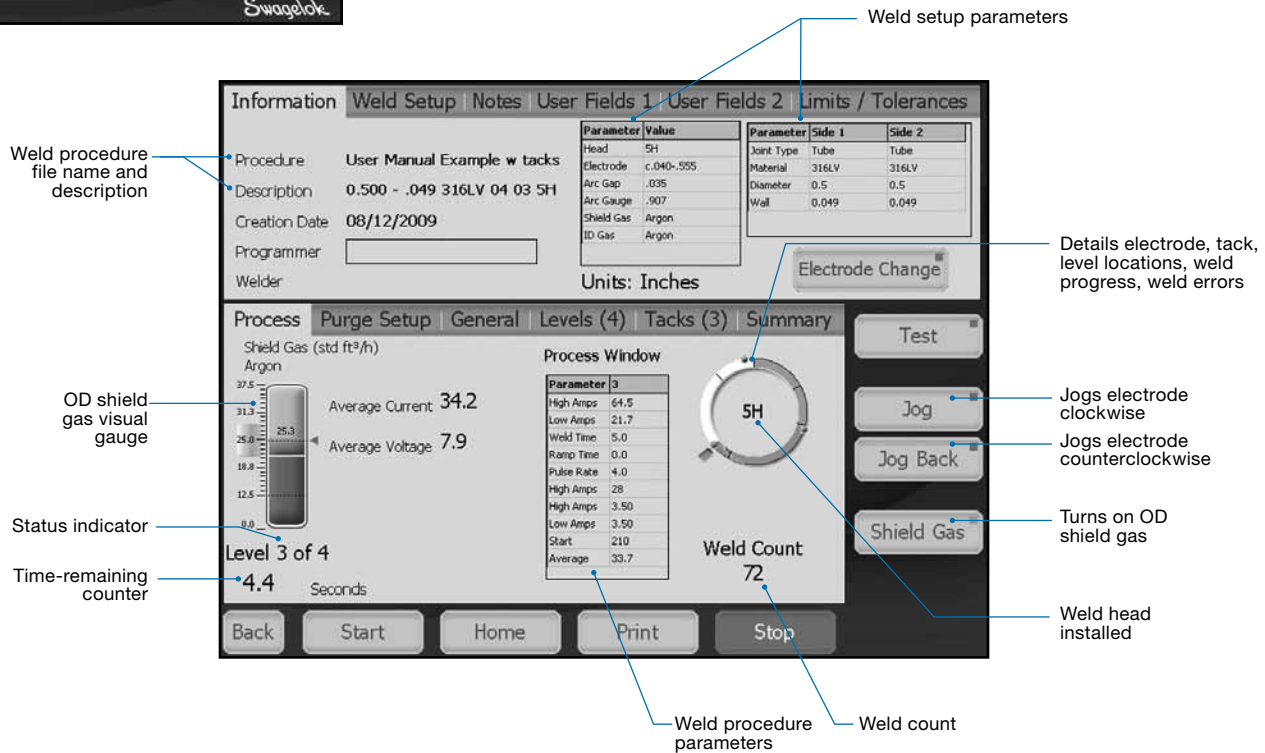
The Swagelok M200 power supply offers simple, user-friendly setup and operation. Screen appearances may vary with accessories in use.



High-Resolution Touch Screen

The large, high-resolution industrial touch screen enables uncomplicated viewing of information and trouble-free data entry. The screen layouts are simple to follow, and information is readily available for viewing or editing.

With the flexibility of multiple language support, the M200 was designed to be a user-friendly power supply.

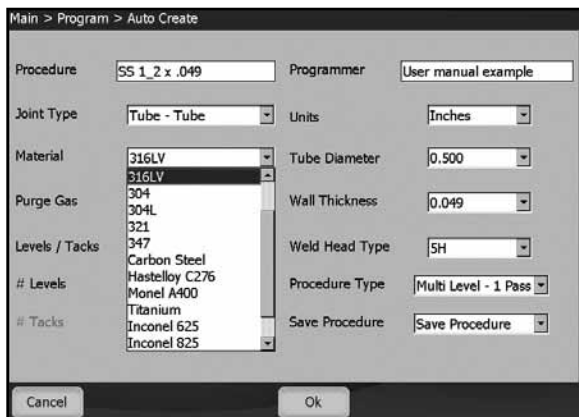


One-Touch Adjustments

Weld procedures are easily adjusted. One-touch adjustments can be made to alter the average current value for individual levels. Additionally, values for specific settings can be entered manually. The need to scroll through multiple screen displays is minimized, as all parameter information is just one touch away.

Automatic OD Shield Gas Flow

The integrated mass flow controller automatically controls OD shield gas flow, which promotes consistent weld results and prevents weld head damage caused by a lack of OD shield gas. In addition, a blast purge feature is available, allowing reduced prepurge time and increased production rates.



Automatic or Manual Weld Procedure Creation

The easy-to-use graphic interface, including the Auto Create feature, provides rapid weld procedure creation and execution. Interface similarities with prior multilevel (Swagelok M100) and single-level (Swagelok D100) power supplies enable easy user transition to the M200 power supply.

Ordering Information

The Swagelok welding system M200 power supply is shipped in a heavy-duty, custom case for ease of storage and transport. Power cord, user's manual, and 1/4 in. male Swagelok Quick-Connect stem are included.

To order an M200 power supply, add a power cord designator and user's manual designator to the basic ordering number: **SWS-M200-**

Example: **SWS-M200-19-E**



Power Cord

Region	Voltage	Plug Type	Designator
Australia, China, New Zealand	230 V 50/60 Hz	AS 3112	18 ^①
Continental Europe, Korea	230 V 50/60 Hz	CEE 7/7	17
Japan, Taiwan	100/115 V 50/60 Hz	NEMA 5-15	13
		NEMA L5-30	20
	200/230 V 50/60 Hz	NEMA L6-20	14
India	230 V 50/60 Hz	BS 546	21
North America	115 V 50/60 Hz	NEMA 5-15	11
		NEMA 5-20	19
	230 V 50/60 Hz	NEMA 6-15	12
United Kingdom	115 V 50/60 Hz	IEC 309	15
	230 V 50/60 Hz	BS 1363	16

^① Not RoHS (EU) compliant.

User's Manual

Language	Designator
Chinese (simplified)	-C
English	-E
French	-F
German	-G
Japanese	-J
Korean	-K
Russian	-R
Spanish	-S

Options and Accessories

Power Cord

A 12 ft (3.7 m) power cord is included with the M200 power supply. To order a separate power cord, add a power cord designator from the table above to the basic ordering number: **SWS-M200-CORD-**
Example: **SWS-M200-CORD-18**



Remote Pendant

The pendant provides remote operation of primary power supply controls, as well as power supply status indicators. The remote pendant comes with a 15 ft (4.6 m) cable. Extension cable is available.

Ordering number: **SWS-M200-REMOTE**



Bar Code Scanner

The scanner allows fast and accurate data entry. The scanner comes with a 6 ft (1.8 m) cable and accepts 1D barcode format (other bar code formats available on request).

Ordering number: **SWS-M200-BARCODE**



Weld Head Adapter Cable

The weld head adapter cable allows connection from Swagelok weld heads with multiturn-style connectors to Swagelok power supplies with quarter-turn-style connectors.

Ordering number: **SWS-M200-WH-ADPTR**



Printer Paper

One roll of paper is included with the M200 power supply. Additional packages of rolls can be ordered separately. Each package contains 10 rolls.

Ordering number: **CWS-DRP-PAPER**



Additional Accessories

Fan filter: **SWS-M200-IND-FLTR**

Port cover: **SWS-M200-PORT-CVR-KIT**

Swagelok Weld Heads

See these Swagelok catalogs:

- Series 20, MS-02-128
- Series 4 and 8, MS-02-130
- Series 40, MS-02-140
- Series 5, MS-02-129
- Series 10, MS-02-131
- Series 8 HPH, MS-02-304

Caution: Do not mix or interchange parts with those of other manufacturers.

About this document

Thank you for downloading this electronic catalog, which is part of General Product catalog Swagelok published in print. This type of electronic catalog is updated as new information arises or revisions, which may be more current than the printed version.

Swagelok Company is a major developer and provider of fluid system solutions, including products, integration solutions and services for industry research, instrumentation, pharmaceutical, oil and gas, power, petrochemical, alternative fuels, and semiconductor. Our manufacturing facilities, research, service and distribution facilities support a global network of more than 200 authorized sales and service centers in 57 countries.

Visit www.swagelok.com to locate your Swagelok representative and obtain any information on features, technical information and product references, or to learn about the variety of services available only through authorized sales centers and service Swagelok.

Safe Product Selection

When selecting a product, the total system design must be considered to ensure safe, trouble-free performance. Function, material compatibility, adequate ratings, proper installation, operation, and maintenance are the responsibilities of the system designer and user.

Warranty Information

Swagelok products are backed by The Swagelok Limited Lifetime Warranty. For a copy, visit your Swagelok Web site or contact your authorized Swagelok representative.

Swagelok Nederland
Coenecoop 19
2741 PG Wadinxveen

info@swagelok.nl
+31 (0) 88 9090 707
nederland.swagelok.com

Swagelok, Ferrule-Pak, Goop, Hinging-Colleting, IGC, Kenmac, Micro-Fit, Nupro, Snoop, Sno-Trik, SWAK, VCO, VCR, Ultra-Torr, Whitey—TM Swagelok Company
Aflas—TM Asahi Glass Co. Ltd.
AL-6XN—TM Allegheny Ludlum Corporation
AutoCAD—TM Autodesk, Inc.
CSA—TM Canadian Standards Association
DeviceNet—TM ODVA
Kalrez, Krytox—TM DuPont
Elgiloy—TM Elgiloy Specialty Metals
FM—TM FM Global
Grafoil—TM GrafTech International Holdings, Inc.
MAC—TM MAC Valves Inc.
Microsoft, Windows—TM Microsoft Corp.
NACE—TM NACE International
picofast—TM HansTurck KG
Pillar—TM Nippon Pillar Packing Company, Ltd.
15-7 PH, 17-7 PH—TM AK Steel Corp.
Sandvik—TM SandvikAB
Silconert—TM Silcotek Corporation
Simriz—TM Freudenberg-NOK
SolidWorks—TM SolidWorks Corporation