

# ALD Diaphragm Valve with Solenoid Pilot Valve






## Solenoid Pilot Valve Replacement Instructions

### Kit Contents



### Tools Required

Tool	Size	Part
	1/16 in.	Button head cap screw
	5/16 in.	Push-to-connect fitting
	capable of 6 in. · lb (0.68 N·m, 6.9 cm·kg)	Button head cap screw

### Symbol



Discard

#### ⚠ WARNING

Before servicing any installed valve, you must

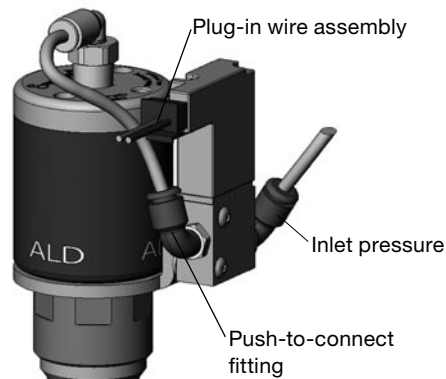
- depressurize system
- cycle valve
- purge the valve

#### ⚠ WARNING

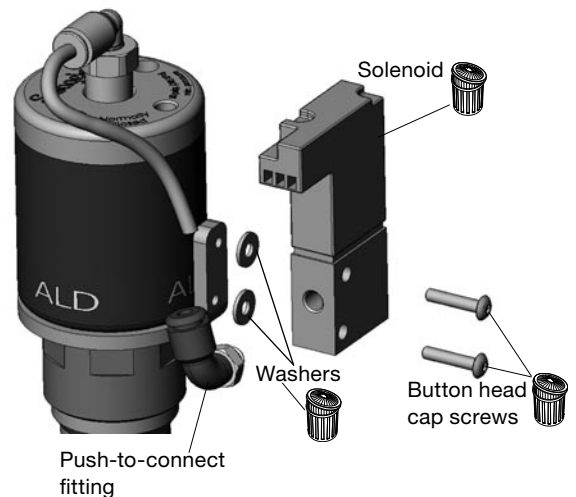
Residual material may be left in the valve and system.

### Disassembly

1. Remove the **inlet pressure** to the solenoid.
2. Disconnect the **plug-in wire assembly** and the tubing from the solenoid **push-to-connect fitting** (push the collar towards the fitting and pull the tubing).

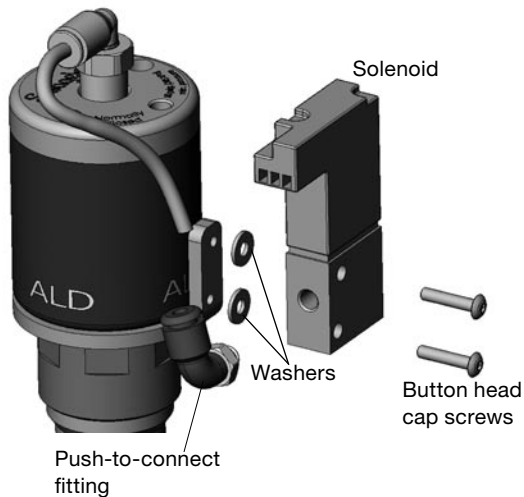


3. Remove **button head cap screws, solenoid, and washers**. Use a 5/16 in. open-ended wrench to remove the **push-to-connect fitting** from the solenoid and set the fitting aside for later use.

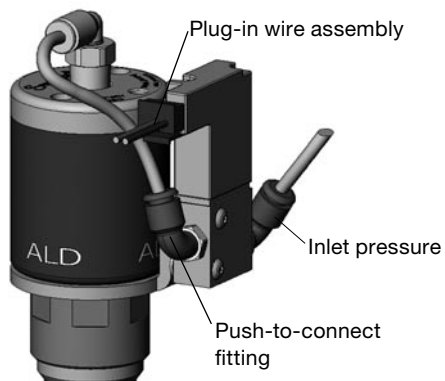


## Reassembly

4. Thread the **push-to-connect fitting** onto the **solenoid** and tighten with 5/16 in. open-ended wrench. Push the **button head cap screws** through the **solenoid** and place a **washer** on each screw.



5. Thread the **button head cap screws** into the **bracket** and tighten to 5 to 6 in.-lb (0.56 to 0.68 N·m, 5.8 to 6.9 cm·kg).
6. Reconnect the tubing into the solenoid **push-to-connect fitting** (push the tubing into the fitting).



7. Reconnect the **plug-in wire assembly** and the **inlet pressure**.
8. Test valve for proper operation.