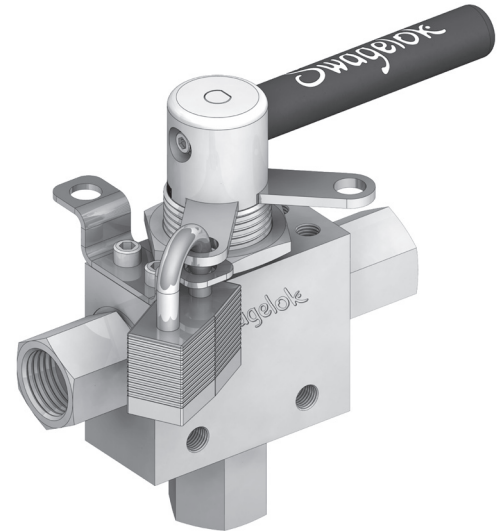
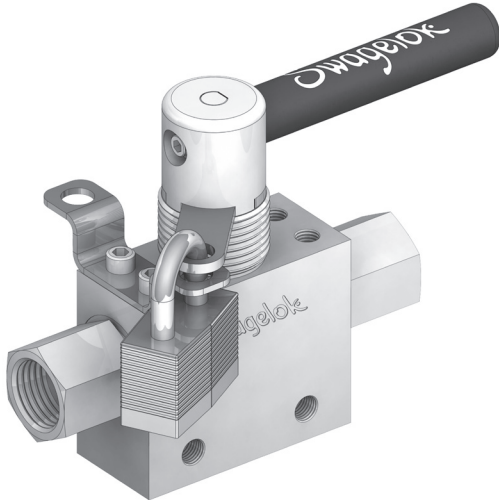


Medium-Pressure Ball Valve

Installation Instructions for Lock-out Handle to FKB Series Medium-Pressure Ball Valves



6FKB series shown

The locking bracket assembly can accommodate shackle diameters from 1/4 in. (6.4 mm) to 5/16 in. (7.9 mm) and requires a minimum shackle length of 3/4 in. (19.0 mm).

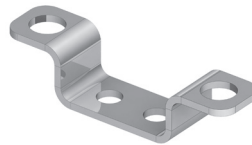
Kit Contents



Locking disk
2-way kit



Locking disk
3-way kit



Locking bracket
6FKB series



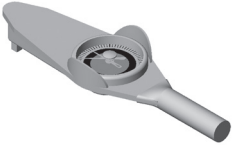


Locking bracket
8FKB and 12 FKB series

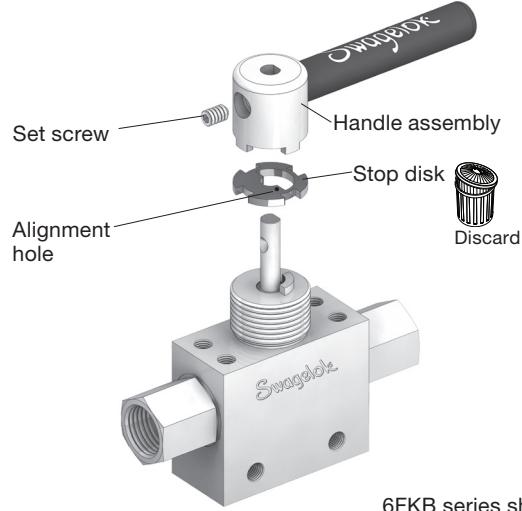


Bracket screw
(2)

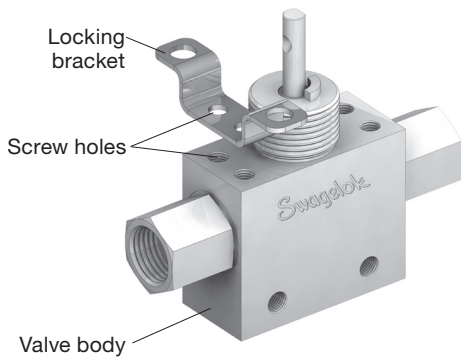
Tools Required

| Tool | Size | Component |
|---|----------------------------------|------------------|
|  | 1/8 in. | Handle set screw |
| | 3/16 in. | Bracket screws |
|  | 1/8 in. | Handle set screw |
|  | Capable of 75 in·lb (8.5 N·m) | Bracket screws |

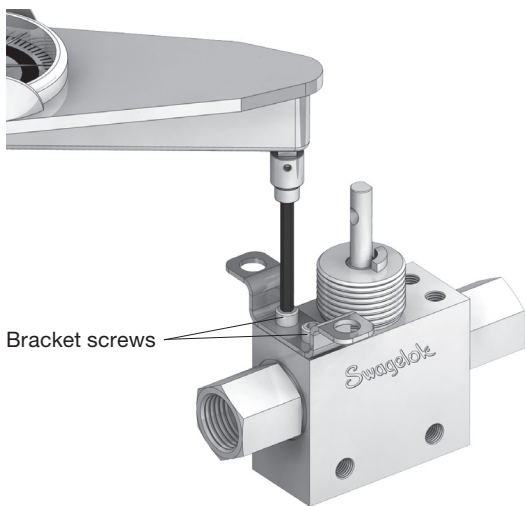
- Using steady pressure and standard hand tools, loosen the **set screw** and remove the **handle assembly**. Note the position of the **alignment hole** on the **stop disk** and remove the stop disk.



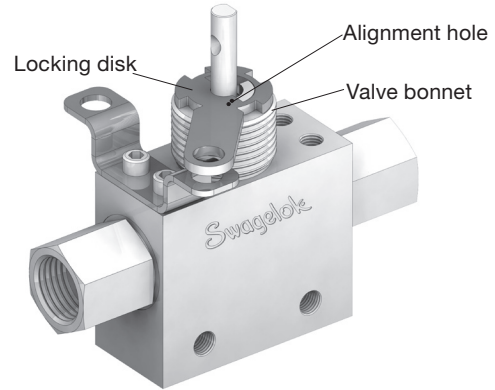
- Place the **locking bracket** on the **valve body** as shown, aligning the **screw holes**.



- Install the two **bracket screws** into the valve body and tighten to 75 in.·lb (8.5 N·m).



- Place the **locking disk** on the **valve bonnet** in the same position as the stop disk removed in step 1.

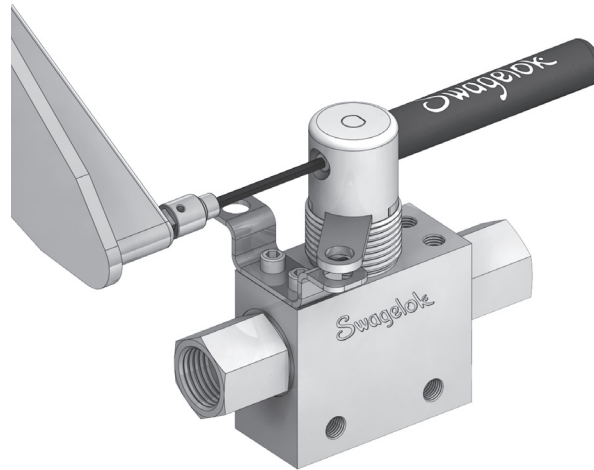


Note: See Medium-Pressure Ball Valve Handle Positioning Instructions, MS-CRD-0121, for more information on handle positioning.

- Press the handle assembly onto the locking disk until it engages.

Note: The top of the stem should be flush with the handle assembly.

- Tighten the set screw to 35 in.·lb (4.0 N·m).



- Test the product prior to reinstallation in system.