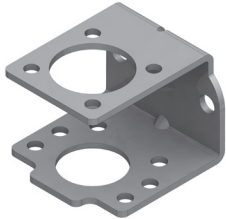


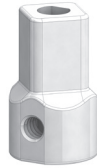
Medium-Pressure Ball Valve Mounting Instructions for FKB Series Medium-Pressure Ball Valves to ISO 5211-Compliant Actuators



Mounting Bracket Kit Contents



Mounting bracket



Coupling

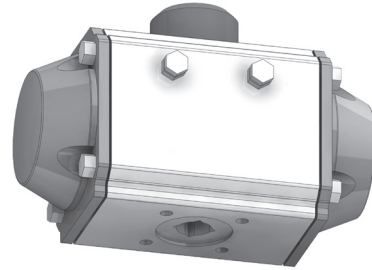


1/4-20
cap screws with
nylon patch
(4)



Cap screws (4)
M5 - 6FKB series
M8 - 8FKB and 12FKB

Actuator Kit Contents



ISO 5211-compliant
actuator

Tools Required

Tool	Size	Component
	1/8 in.	Coupling set screw
	3/16 in.	1/4-20 cap screws
	5.0 mm × 150 mm	M5 cap screws
	8.0 mm × 150 mm	M8 cap screws
	1/8 in.	Handle set screw
	Capable of 75 in·lb (8.5 N·m)	Cap screws

⚠ WARNING

Before removing a valve from the system for service, you must

- depressurize system
- cycle the valve
- purge the valve.

⚠ WARNING

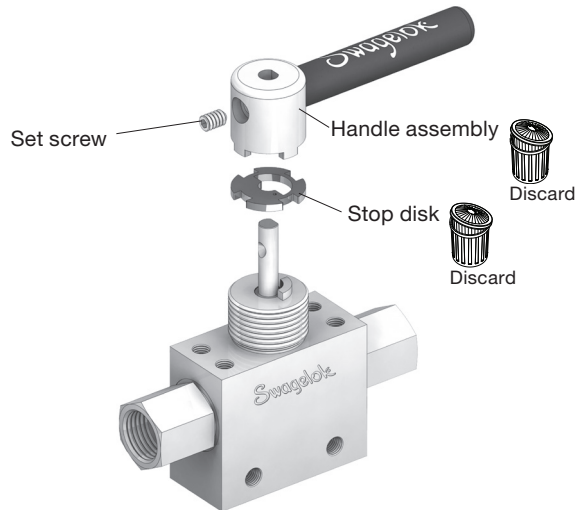
Residual system media may be left in the valve.

⚠ CAUTION

Actuated assemblies must be properly aligned and supported. Improper alignment or inadequate support of the actuated assembly may result in shorter valve life.

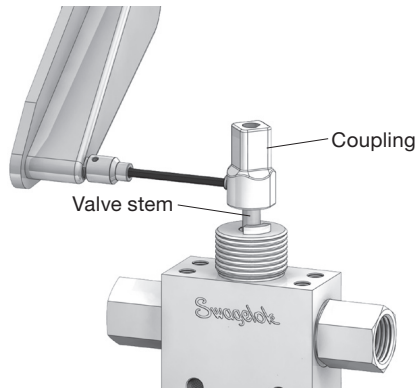
Valve Preparation

1. Normally open assemblies: place the valve in the open position. Normally closed assemblies: place the valve in the closed position.
2. Using steady pressure and standard hand tools, loosen the **set screw** and remove the **handle assembly** and **stop disk**. Remove the set screw from the handle assembly and set aside.

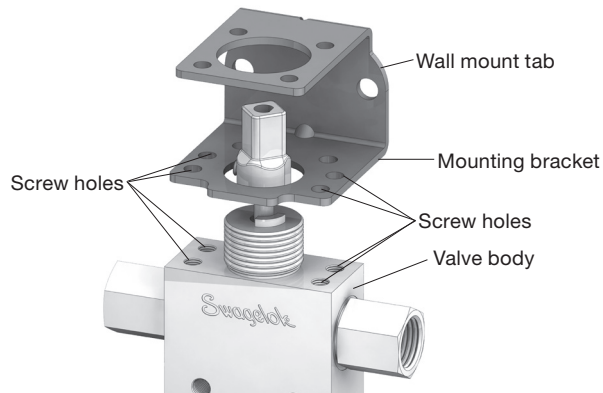


3. Slide the **coupling** onto the **valve stem**. Thread the set screw into the coupling, aligning the set screw with the dimple on the valve stem. Tighten the set screw to 35 in.-lb (4.0 N-m).

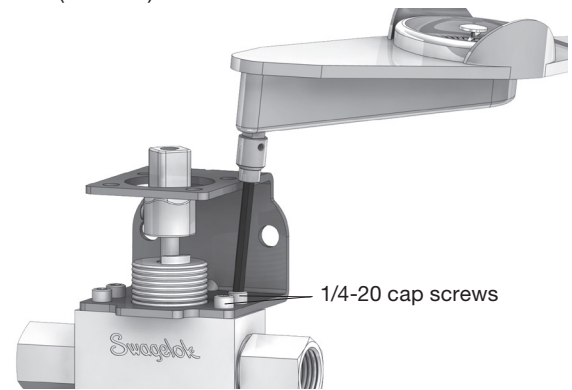
Note: The set screw indicates the orifice position.



4. Place the **mounting bracket** on the **valve body**, aligning all four **screw holes**.



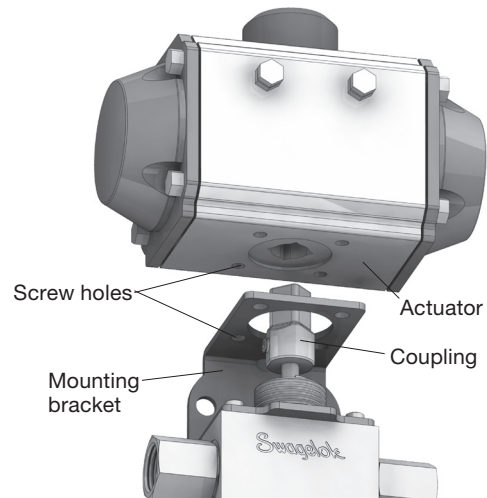
5. Install the four **1/4-20 cap screws** (marked with a nylon patch on each screw) into the valve body and tighten to 75 in.-lb (8.5 N-m).



Mounting Instructions

6. Slide the **actuator** onto the **coupling** and align the actuator **screw holes** to the **mounting bracket** screw holes.

Note: Verify the air line connections on the actuator will be accessible after mounting.



7. Thread the four **M5 or M8 cap screws** into the actuator and tighten to 75 in.-lb (8.5 N-m).



8. Test the product prior to reinstallation in system.