

KCB Series Regulators Maintenance Instructions



Kit Contents



Seat retainer



Seat



Retainer seal



Piston seal



Lubricant
MS-LT-WL8

Tools Required

Tool	Size	Component
<p>Vise</p>	-	Body
<p>Socket</p>	5/8 in. or 16 mm	Seat retainer
	11/16 in. or 17 mm	Antitamper nut
<p>Crow's foot</p>	1 1/4 in. or 32 mm	Body cap
<p>Open-ended wrench</p>	1 1/4 in. or 32 mm	Body cap
<p>Torque wrench</p>	Capable of 25 ft·lb (34 N·m, 3.5 m·kg)	Seat retainer, Body cap

Symbols

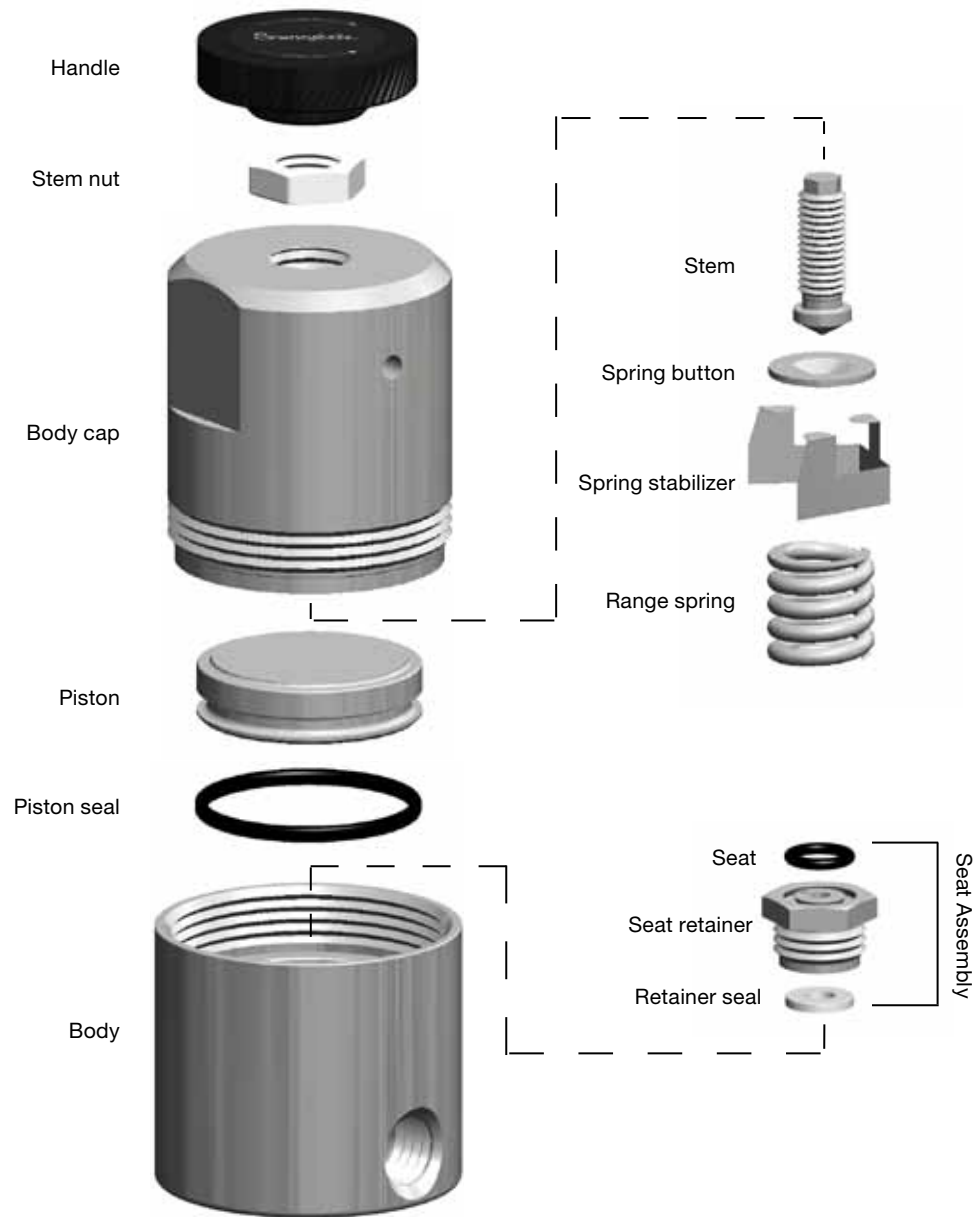


Discard



Lightly lubricate

Exploded View



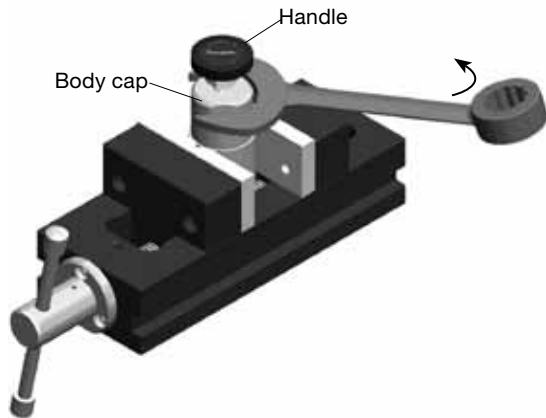
⚠ WARNING

Before removing a regulator from the system for service, you must

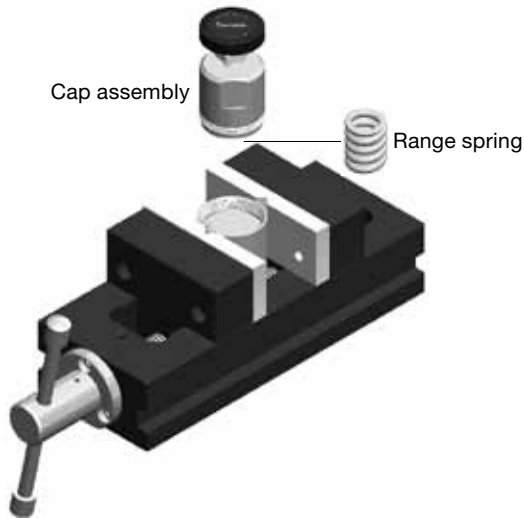
- depressurize system
- purge the system to remove any residual system media left in the regulator.

Disassembly

1. Place the regulator in a vise.
2. Turn the **handle** counterclockwise until it stops.
Note: If using an antitamper nut, remove it from the body. Then turn the stem counter clockwise until it stops.
3. Loosen the **body cap**.



4. Remove the **cap assembly** and handle as one piece and set aside for later use.
Note: The **range spring** may fall from the cap assembly when lifted. Set aside for later use.



5. Turn the **body** upside down. Remove the **piston assembly** by tapping the body gently on a soft surface.



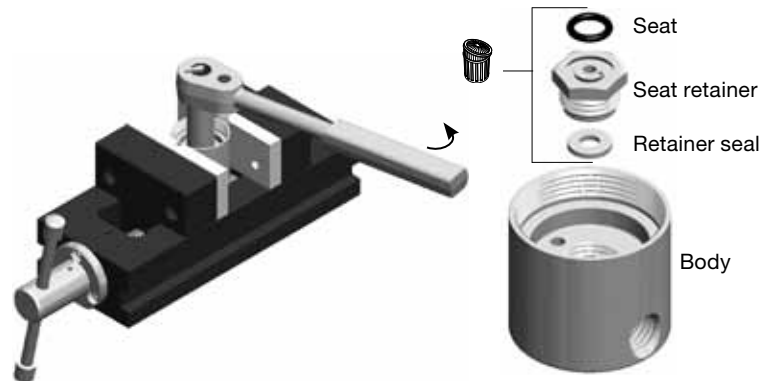
6. Remove and discard the **piston seal** from the **piston**.



7. Loosen and remove the **seat assembly**. Discard the **seat**, **seat retainer** and **retainer seal**.

NOTICE

Be careful not to scratch the inside of the body. Leakage could result.

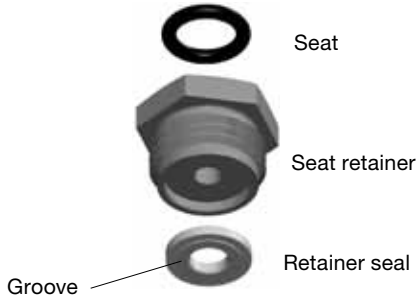


Reassembly

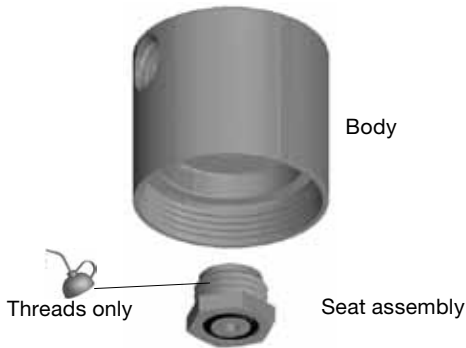
NOTICE

Ensure all parts and tools are free of debris or damage.

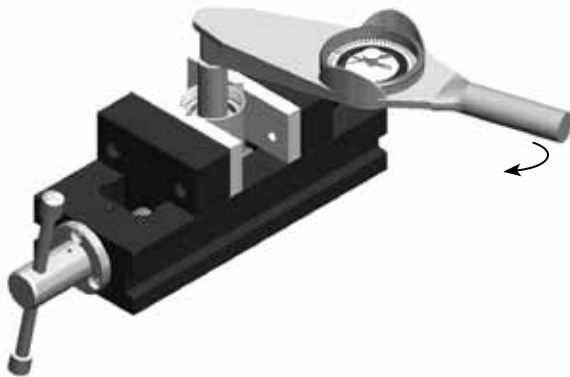
8. Insert the **retainer seal** into the **seat retainer** with the groove facing away. Insert the **seat** into the seat retainer.



9. Invert the body and thread the **seat assembly** into the **body**.



10. Tighten the **seat assembly** to 11.2 ft-lb (15.2 N-m, 1.6 m·kg).



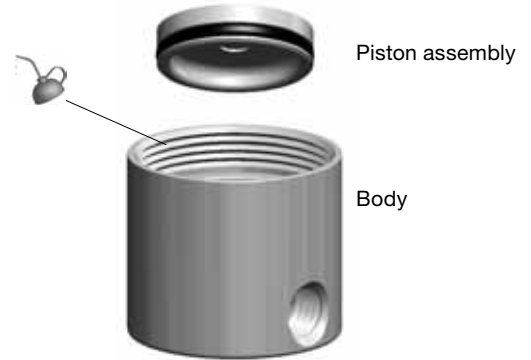
11. Place the **piston seal** onto the **piston**.



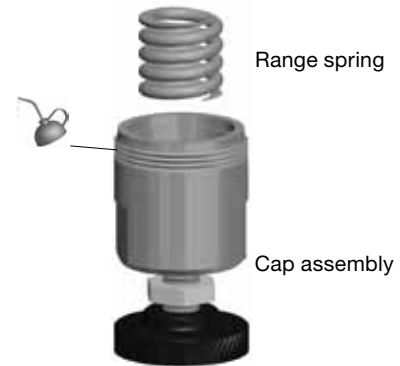
12. Place the **piston assembly** into the **body** until it seats against the seat retainer.

NOTICE

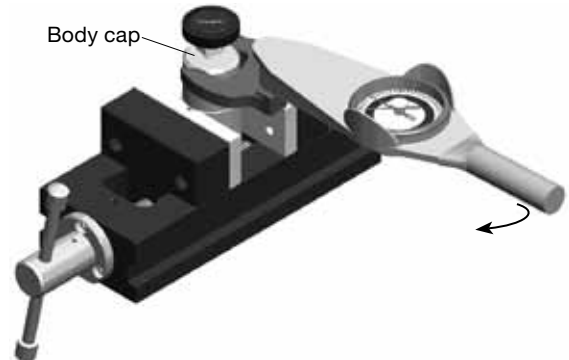
Do not damage the piston seal. Leakage could result.



13. Reinsert the **range spring** into the **cap assembly** with the painted spring end visible if necessary.



14. Thread the cap assembly into the body and tighten the **body cap** to 25 ft-lb (34 N-m, 3.5 m·kg).



15. Test the regulator for proper operation.

16. If using an antitamper nut, thread the antitamper nut onto the stem after the set outlet pressure is reached. Tighten the nut to 13.0 ft-lb (17.5 N-m, 1.8 m·kg).

For additional information, see www.swagelok.com.